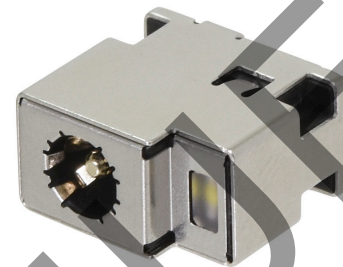


**MODEL:** PJ-099H-LED | **DESCRIPTION:** DC POWER JACK

**FEATURES**

- 1.65 mm center pin
- 5.0 A rating
- shielded
- vertical orientation
- LED


**SPECIFICATIONS**

| parameter                       | conditions/description   | min | typ   | max      | units    |
|---------------------------------|--|-----|-------|----------|----------|
| rated input voltage             |  |     | 24    |          | Vdc      |
| rated input current             |  |     |       | 5.0      | A        |
| contact resistance <sup>1</sup> | between terminal and mating plug<br>between terminal in a closed circuit |     |       | 50<br>30 | mΩ<br>mΩ |
| insulation resistance           | at 500 Vdc between adjacent contacts                                     | 100 |       |          | MΩ       |
| voltage withstand               | for 1 minute, 0.5 mA between adjacent contacts                           |     |       | 500      | Vac      |
| insertion/withdrawal force      |  | 0.3 |       | 3        | kg       |
| operating temperature           |  | -25 |       | 85       | °C       |
| life                            | at a rate of 24 cycles/minute  |     | 5,000 |          | cycles   |
| flammability rating             | UL94V-0  |     |       |          |          |
| RoHS                            | yes  |     |       |          |          |

Note: 1. When measured at a current of less than 100 mA/1 kHz  
2. All specifications measured at 10-35°C, humidity at 45-85%, under standard atmospheric pressure, unless otherwise noted.

**SOLDERABILITY**

| parameter      | conditions/description | min | typ | max | units |
|----------------|------------------------|-----|-----|-----|-------|
| hand soldering | for max 5 seconds      |     |     | 300 | °C    |

**LED ABSOLUTE MAXIMUM RATINGS (TA=25°C)**

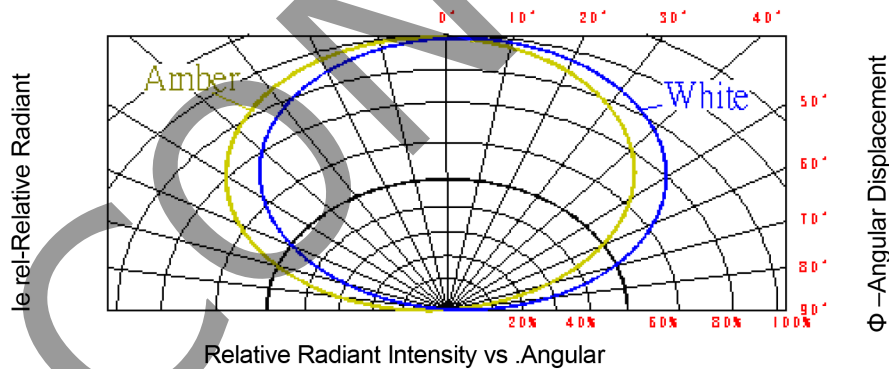
| parameter                                 | conditions/description | min | typ | max | units |
|---|------------------------|-----|-----|-----|-------|
| power dissipation (PD)                    | amber                  |     |     | 52  | mW    |
|   | white                  |     |     | 74  | mW    |
| DC forward current (IF)                   | amber                  |     |     | 20  | mA    |
|   | white                  |     |     | 20  | mA    |
| pulsed forward current (IFP) <sup>3</sup> | amber                  |     |     | 90  | mA    |
|   | white                  |     |     | 90  | mA    |
| reverse voltage (VR)                      | amber                  |     |     | 5   | V     |
|   | white                  |     |     | 5   | V     |

Note: 3. Duty cycle 1/10, pulse width 0.1 ms.

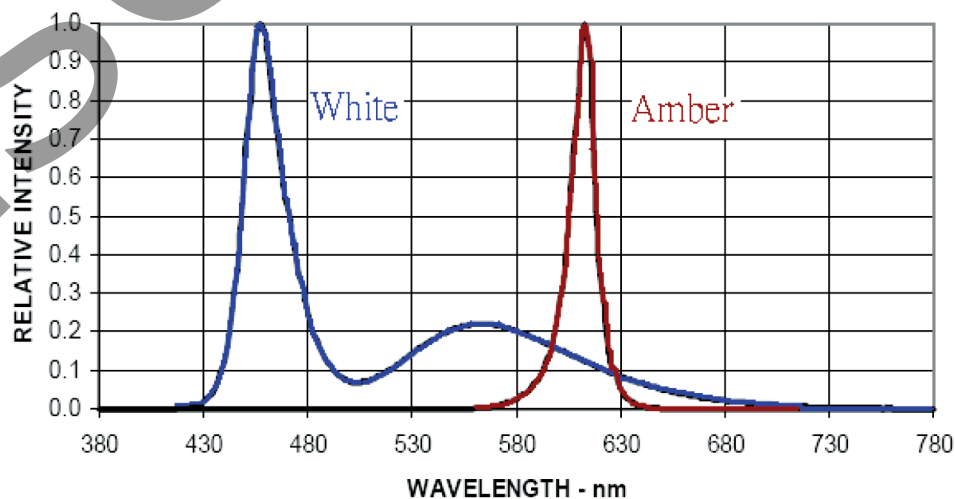
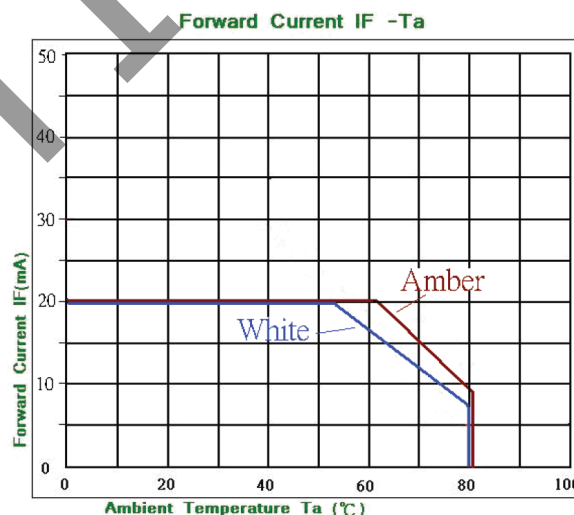
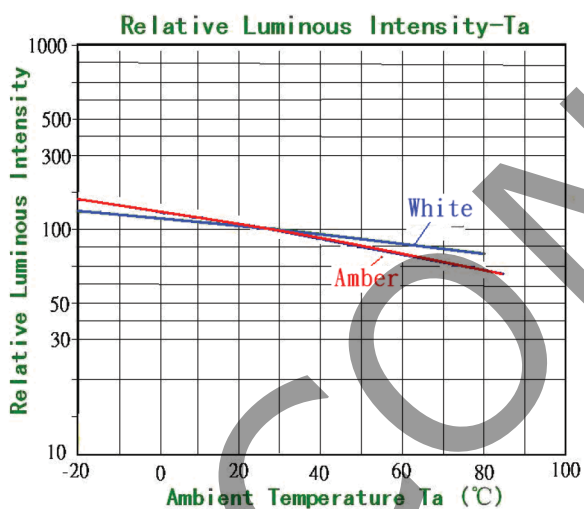
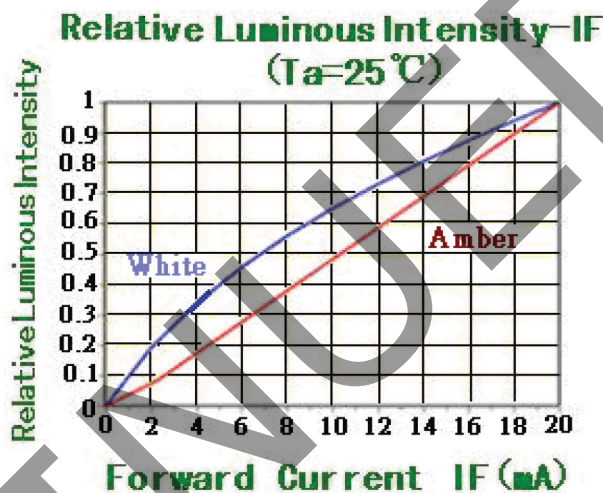
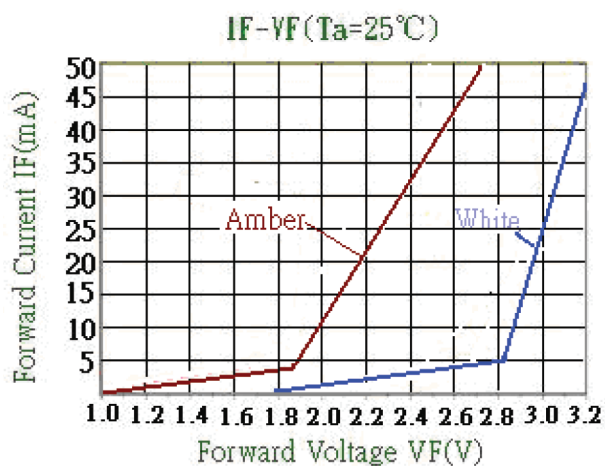
**LED ELECTRO-OPTICAL CHARACTERISTICS (TA=25°C)**

| parameter               | conditions/description | min  | typ | max   | units |
|-------------------------|------------------------|------|-----|-------|-------|
| forward voltage (Vf)    | at If=20 mA            |      |     |       |       |
|                         | amber                  | 1.7  | 2.0 | 2.6   | V     |
| luminous intensity (Iv) | at If=20 mA            |      |     |       |       |
|                         | amber                  | 37.6 | 520 | 192.4 | mcd   |
| wavelength (λd)         | at If=20 mA            |      |     |       |       |
|                         | white                  | 600  |     | 612   | nm    |
| reverse current (Ir)    | at Vr=5 V              |      |     | 10    | μA    |
| viewing angle (2θ1/2)   | at If=20 mA            |      | 130 |       | deg   |

Note: 4. Luminous intensity ±10%; forward voltage ±0.1 V; wavelength ±0.5 nm, (X,Y) ±0.01 is standard testing.

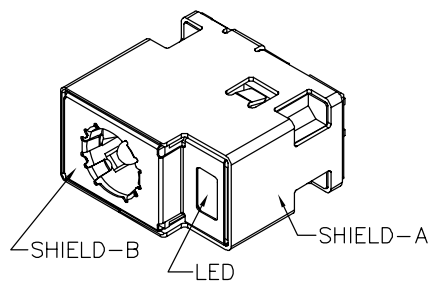


## LED CHARACTERISTIC CURVES

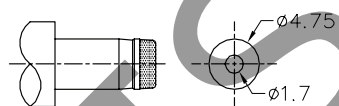
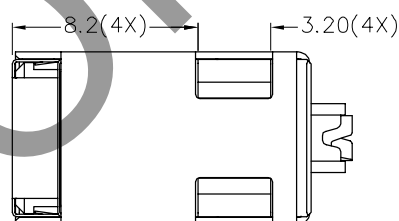
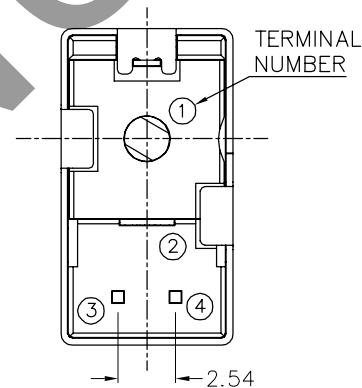
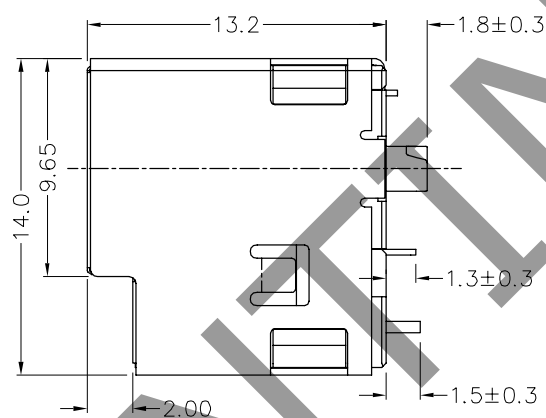
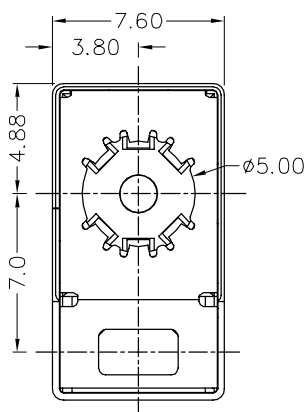


## MECHANICAL DRAWING

units: mm  
 tolerance:  
 X.X ±0.2 mm  
 X.XX ±0.10 mm  
 X.XXX ±0.050 mm

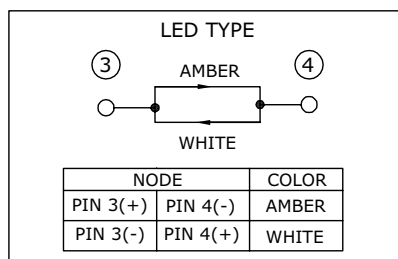


|            | MATERIAL        | PLATING    |
|------------|-----------------|------------|
| center pin | copper          | gold flash |
| terminal 1 | copper          | gold flash |
| terminal 2 | copper alloy    | gold flash |
| terminal 3 | iron alloy      | silver     |
| terminal 4 | iron alloy      | silver     |
| shield-A   | brass           | nickel     |
| shield-B   | stainless steel |            |
| insulator  | PA66            |            |



MATING PLUG  
 Jack Insertion Depth: 8.4 mm

|            |             |
|------------|-------------|
| Schematic  |             |
| Model      | PJ-099H-LED |
| Center Pin | Ø1.65 mm    |



## REVISION HISTORY

| rev. | description                  | date       |
|------|------------------------------|------------|
| 1.0  | initial release              | 12/17/2018 |
| 1.01 | brand update                 | 10/25/2019 |
| 1.02 | logo, datasheet style update | 08/05/2022 |

The revision history provided is for informational purposes only and is believed to be accurate.



CUI Devices offers a one (1) year limited warranty. Complete warranty information is listed on our website.

CUI Devices reserves the right to make changes to the product at any time without notice. Information provided by CUI Devices is believed to be accurate and reliable. However, no responsibility is assumed by CUI Devices for its use, nor for any infringements of patents or other rights of third parties which may result from its use.

CUI Devices products are not authorized or warranted for use as critical components in equipment that requires an extremely high level of reliability. A critical component is any component of a life support device or system whose failure to perform can be reasonably expected to cause the failure of the life support device or system, or to affect its safety or effectiveness.

[cuidevices.com](http://cuidevices.com)