

**MODEL:** UJ40-C-MSMT-TR-68 | **DESCRIPTION:** USB RECEPTACLE**FEATURES**

- USB Type C receptacle
- IP68
- USB 4.0
- o-ring accessory
- tape & reel packaging

**SPECIFICATIONS**

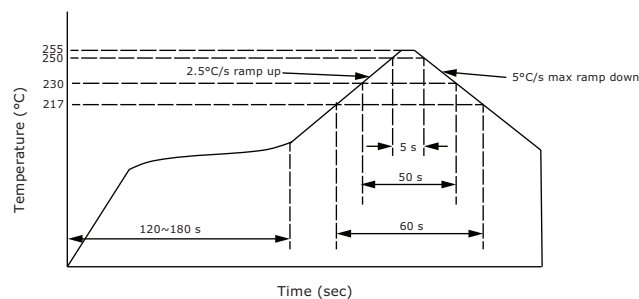
parameter	conditions/description	min	typ	max	units
USB standard	USB 4.0				
rated input voltage				20	Vdc
rated input current	as per EIA-364-70, Method B				
	power pins collectively [A1, A4, A9, A12, B1, B4, B9, B12]			5.0	A
	VCONN pins individually [A5, B5]			1.25	A
	all other signal pins individually			0.25	A
contact resistance <sup>1</sup>	between terminals and mating plug			40	mΩ
insulation resistance	between adjacent contacts	100			MΩ
voltage withstand	between adjacent contacts	100			Vac
insertion force		5		20	N
withdrawal force		6		20	N
life			10,000		cycles
operating temperature		-40		85	°C
flammability rating	UL94V-0				
RoHS	yes				
IP level	IP68				

Note: 1. When measured at 20 mV / 100 mA.  
2. All specifications measured at 10~35°C, humidity at 45~85%, under standard atmospheric pressure, unless otherwise noted.

**SOLDERABILITY**

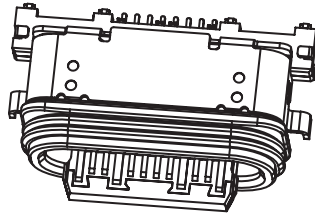
parameter	conditions/description	min	typ	max	units
reel storage	at relative humidity 65~70%	25		30	°C
reflow soldering <sup>3</sup>	see reflow profile		255	260	°C

Note: 3. It is recommended to reflow solder within 3 months from opening vacuum packaging at a temperature of 25~30°C & relative humidity 65~70%.

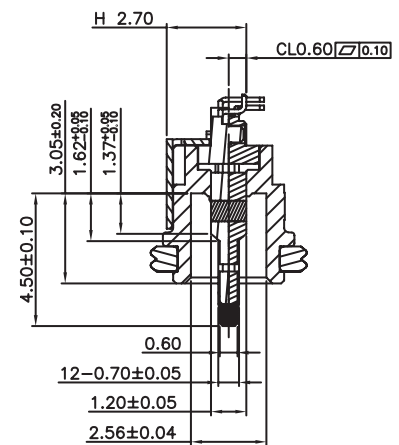
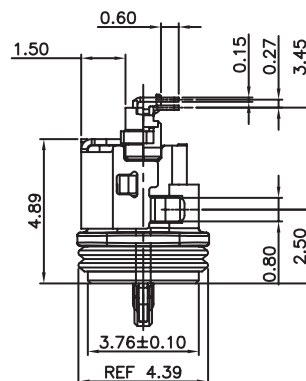
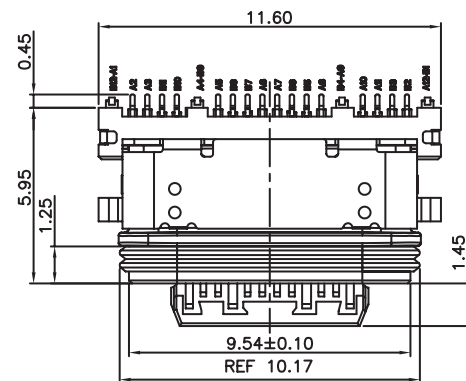


## MECHANICAL DRAWING

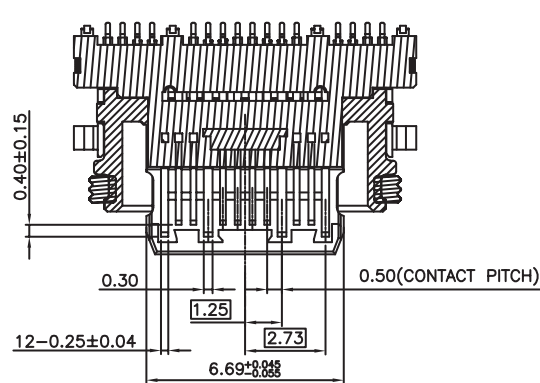
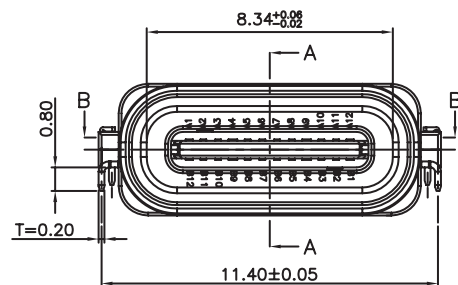
units: mm  
 tolerance:  
 X.  $\pm 0.50$  mm  
 X.X  $\pm 0.30$  mm  
 X.XX  $\pm 0.20$  mm  
 X.XXX  $\pm 0.10$  mm  
 unless otherwise specified



DESCRIPTION	MATERIAL	PLATING/COLOR
insulator	LCP [UL94V-0]	black
contact	copper alloy t=0.15 mm	contact area: gold flash over nickel-tin solder area: tin over nickel
shell	stainless steel t=0.20 mm	nickel
o-ring	silicone	black

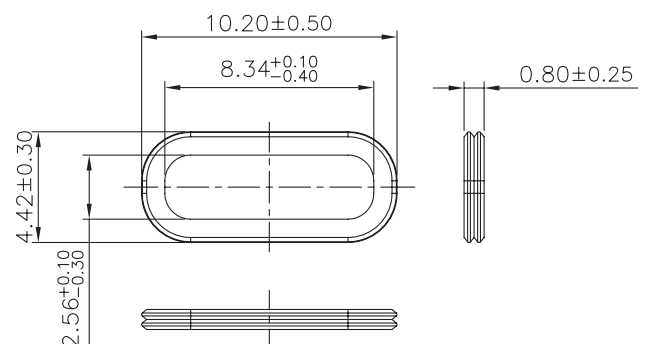
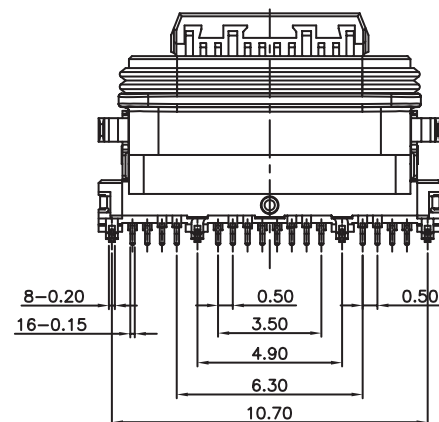


SECTION A-A



SECTION B-B

O-ring



units: mm  
PCB tolerance:  $\pm 0.05$  mm

This mechanical drawing illustrates the layout of a printed circuit board (PCB) with various dimensions and component footprints. The drawing is oriented horizontally, with dimensions provided in millimeters.

**Dimensions:**

- Overall Width:** 11.40
- Overall Height:** 4.65
- Top Section Widths:** 10.70, 9.30, 4.90, 3.50, 0.50
- Top Section Heights:** 1.10, 3.90
- Bottom Section Widths:** 10.20, 11.40
- Bottom Section Heights:** 3.60, 4-0.80, 4-1.10, 2-0.95, 2-0.40, 2-PTH
- Internal Dimensions:** 16-0.25, 4-0.40, 4-0.70, 4-PTH, 2-1.20, 2-1.70, C 0.40, R0.50
- Pitch:** 0.50

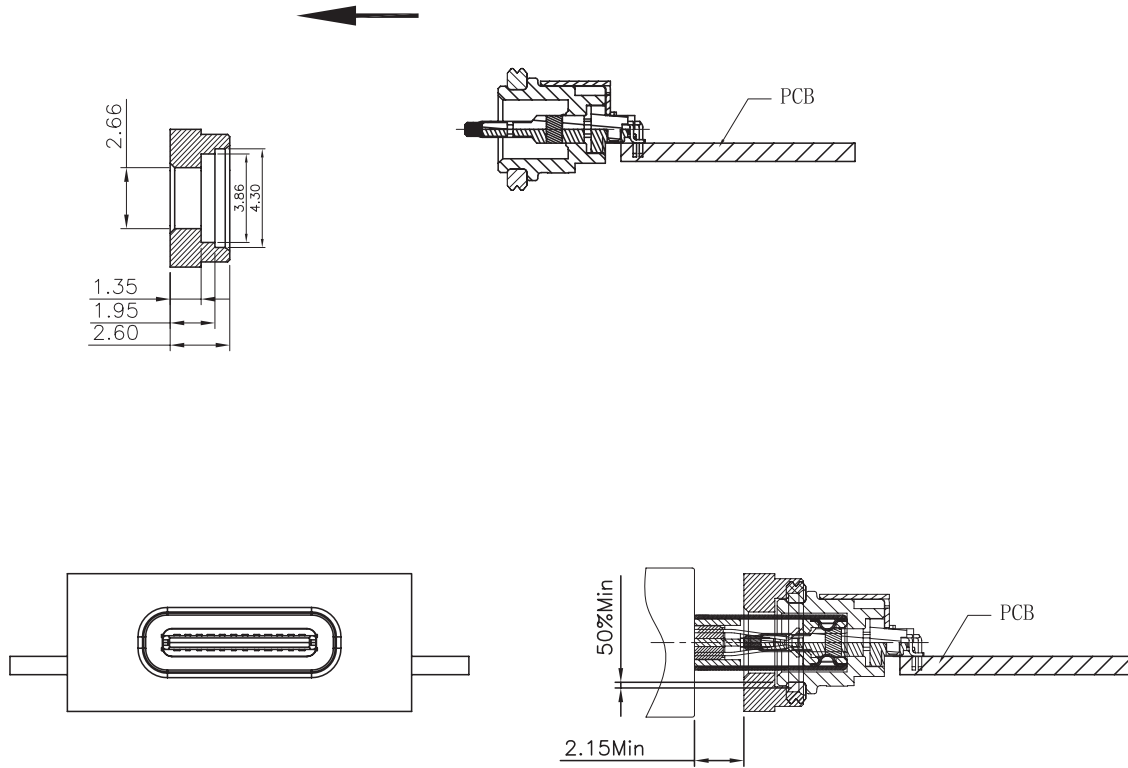
**Component Footprints:**

- Top Section:** B12-A1, A2, A3, B11, B10, A4-B9, A5, B8, B7, A6, A7, B6, B5, A8, B4-A9, A10, A11, B3, B2, A12-B1
- Bottom Section:** 2-PTH, 2-0.40, 2-0.95

The drawing includes a reference dimension of 1.05 (REF) on the left side. The layout is symmetrical, with dimensions and footprints mirrored across the center.

**cuidevices.com**

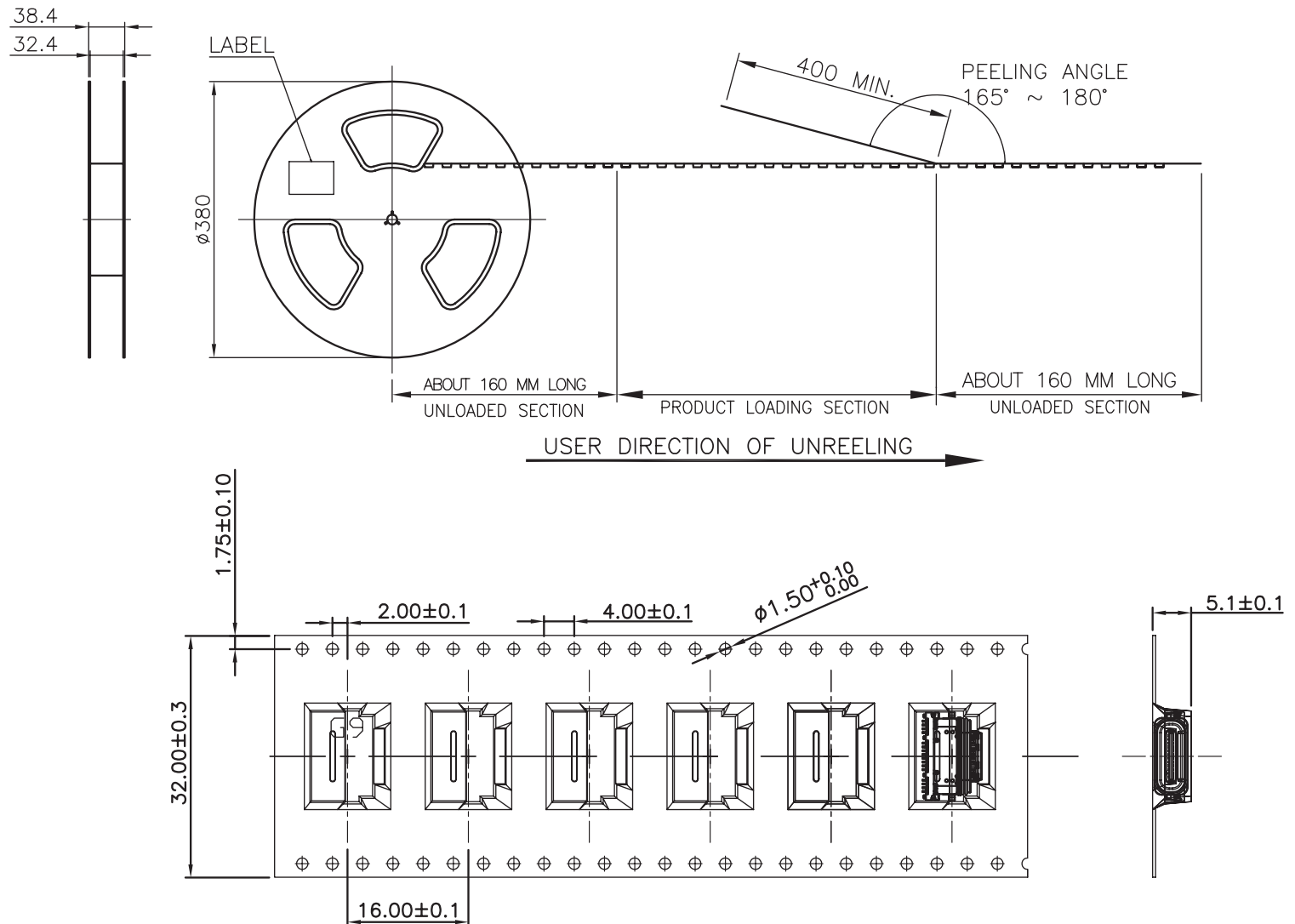
## ASSEMBLY REFERENCE



## PACKAGING

units: mm

Reel Size:  $\varnothing 380$  mm  
Reel QTY: 1,000 pcs per reel  
Carton Size: 405 x 405 x 330 mm  
Carton QTY: 10,000 pcs



## REVISION HISTORY

rev.	description	date
1.0	initial release	08/23/2023

The revision history provided is for informational purposes only and is believed to be accurate.



CUI Devices offers a one (1) year limited warranty. Complete warranty information is listed on our website.

CUI Devices reserves the right to make changes to the product at any time without notice. Information provided by CUI Devices is believed to be accurate and reliable. However, no responsibility is assumed by CUI Devices for its use, nor for any infringements of patents or other rights of third parties which may result from its use.

CUI Devices products are not authorized or warranted for use as critical components in equipment that requires an extremely high level of reliability. A critical component is any component of a life support device or system whose failure to perform can be reasonably expected to cause the failure of the life support device or system, or to affect its safety or effectiveness.

**cuidevices.com**